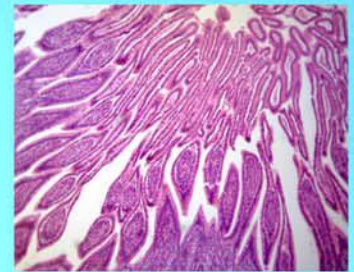




BYk 'Mcf_ 'AJWcgWtdY7 ca dUbnibW
100 Lauman Lane, Suite A, Hicksville, New York 11801
Phone: 877.877.7274 - Fax: 516.801.2046
www.microscopeinternational.com - info@nyscopes.com



NYMCS-615 Trinocular laboratory Metallurgical Microscope with Infinite Optical System, Bright Field and Dark Field Objectives, Extra Wide Field, Reflected and Kohler Illumination

Laboratory metallurgical microscope, including bright field, dark field and polarization observation system. With the stable stand structure, advanced stage design and comfortable operation. Powerful reflected system with Kohler illumination. Ideal instrument for metallurgical analysis, industry inspection and science research.

1HZ <RUN 0LFURVFRSH &RPSDQV
/DXPDQ /DQH 6XLWH \$ +LFNVYLC
3KRQH)D[
ZZZ PLFURVFRSHLQWHUQDWLRQDO F

NYMCS-615 Trinocular laboratory Metallurgical Microscope with Infinite Optical System, Bright Field and Dark Field Objectives, Extra Wide Field, Reflected and Kohler Illumination

Features

Laboratory metallurgical microscope, including bright field, dark field and polarization observation system, DIC attachment is also optional. Powerful reflected system with Kohler illumination. Ideal instrument for metallurgical analysis, industry inspection and science research.

Applications

NYMCS-615 Trinocular Laboratory Metallurgical Microscope with Infinite Optical System, Bright Field and Dark Field Objectives, Extra Wide Field, Reflected and Kohler Illumination is widely used in institutes and laboratories to observe and identify the structure of various metals and alloys. It also can be widely used in the electronics, chemical and instrumentation industry to observe opaque materials and transparent materials, such as metal, ceramics, integrated circuits, electronic chips, printed circuit boards, LCD panels, film, powder, toner, wire, fibers plated coatings, and other non-metallic materials and so on.

Technical Specifications

Optical System:	Infinite optical system
Viewing Head:	Siedentopf binocular viewing head, inclined at 30°, interpupillary distance 48-75mm
Eyepiece:	
Infinite Plan Achromatic Objective:	5x/ 0.12/ / - (BF/DF), WD 12mm - (BF/DF), WD 10.0mm (BF/DF), WD 4.3mm
Nosepiece:	Backward quintuple nosepiece
Stage:	Double layer mechanical stage (without hole) 186 x 138mm / 74mm x 50mm
Focusing:	Coaxial Coarse and Fine Adjustment, Fine Division 0.001mm, Coarse Stroke 37.7mm per Rotation, Fine Stroke 0.1mm per Rotation, Moving Range 24mm
Maximum Sample Height:	50mm
Reflected Light:	24V 100W Halogen light, Brightness adjustable Kohler illumination and aspherical condenser Blue, Green, Yellow and Frosted filter

